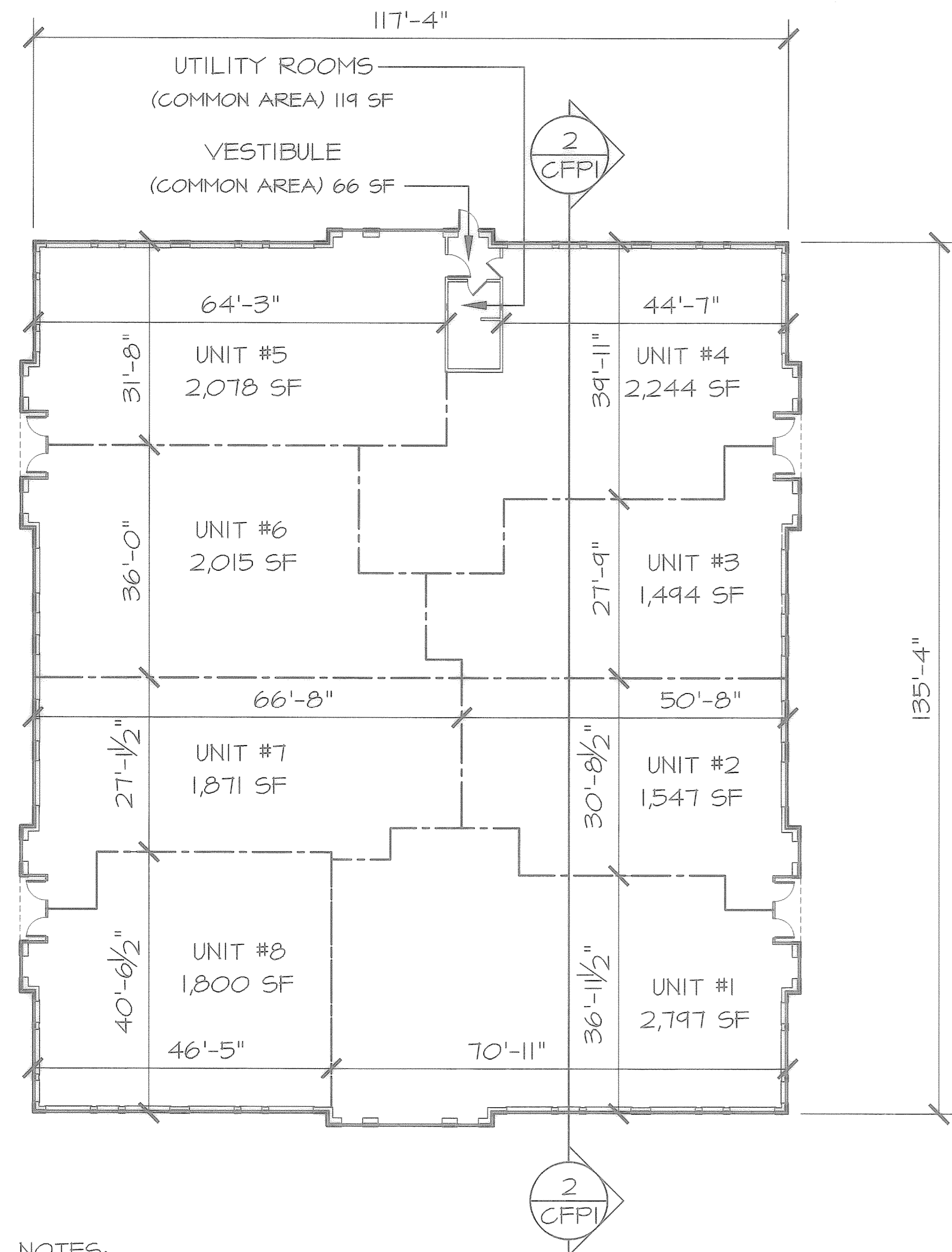
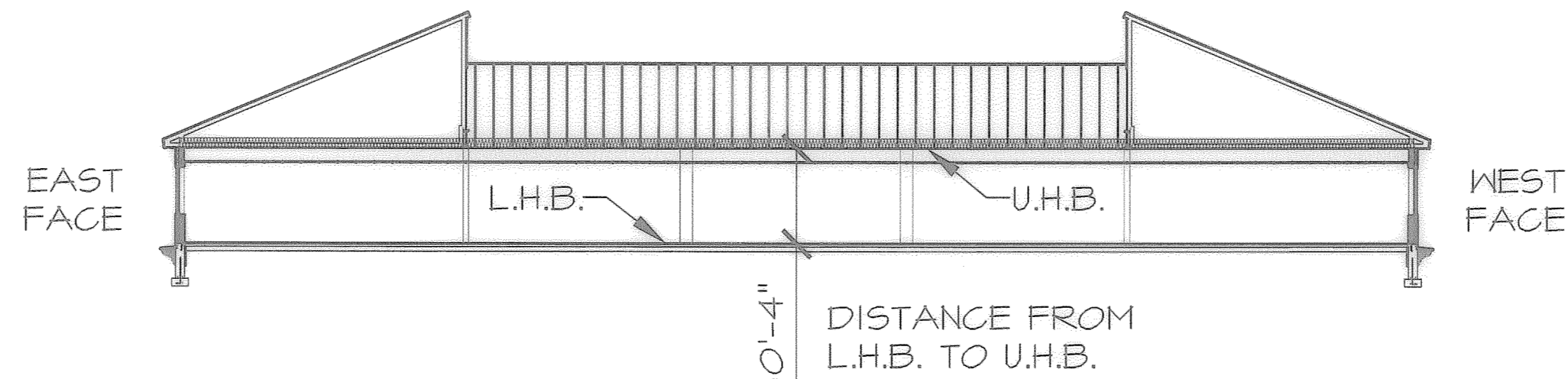


LAKES PROFESSIONAL CENTER, A CONDOMINIUM
 LAKES PROFESSIONAL CENTER CONSISTS OF ONE OFFICE BUILDING,
 369 HOUNSELL AVE, GILFORD, NH
 THE UNITS DEPICTED ON THIS PLAN ARE SUBSTANTIALLY COMPLETE AS DEFINED
 IN SECTION 3.4 OF THE DECLARATION OF CONDOMINIUM



- NOTES:
- SQUARE FOOTAGE CALCULATED TO OUTSIDE OF EXTERIOR WALLS AND TO CENTER LINE OF INTERIOR (DEMISING) WALLS.
 - DIMENSIONS SHOWN FROM CENTER LINE OF UNIT DEMISING WALLS TO OUTSIDE MASONRY FACE OF EXTERIOR WALLS.
 - ALL DIMENSIONS ROUNDED TO THE NEAREST INCH.
 - DETAILS OF VERTICAL BOUNDARIES OF UNITS ARE SET FORTH IN SECTION 3.4 (C) OF THE DECLARATION OF CONDOMINIUM.

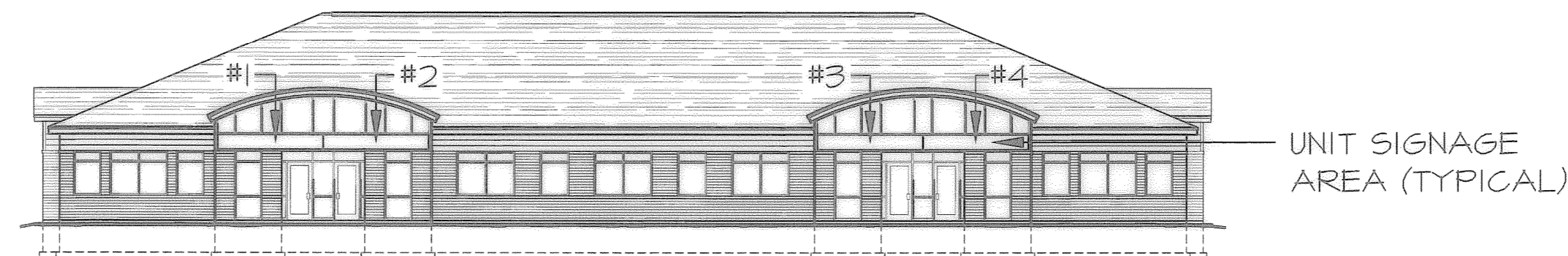
1 FLOOR PLAN
 CFPI 1/16" = 1'-0"



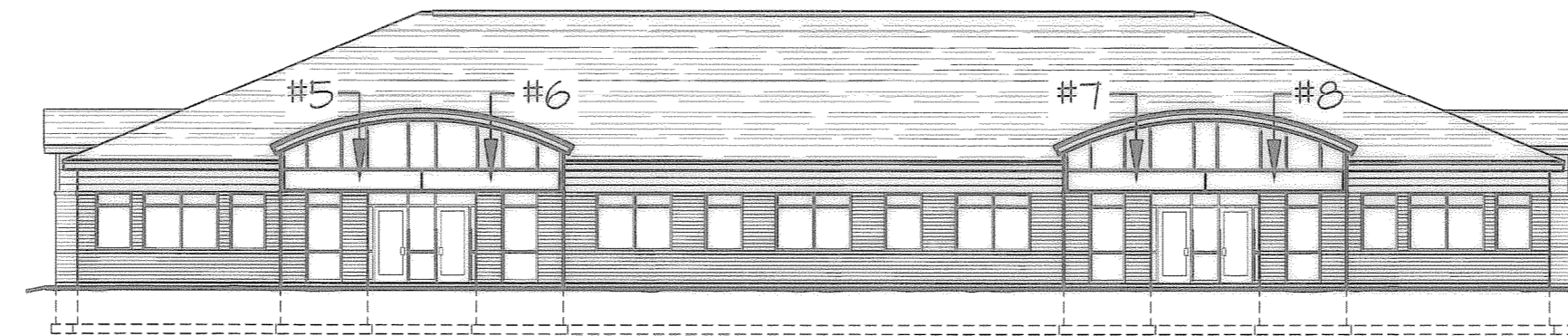
- NOTES:
- U.H.B. = PLANE(S) AT BOTTOM CHORD OF ROOF TRUSSES.
 - L.H.B. = IMAGINARY PLANE AT FINISHED FLOOR ELEVATION 49.3' ASL NGVD 29

2 BUILDING SECTION
 CFPI 1/16" = 1'-0"

LAKES PROFESSIONAL CENTER
 PLAN OF UNIT SIGNAGE (LIMITED COMMON AREAS)

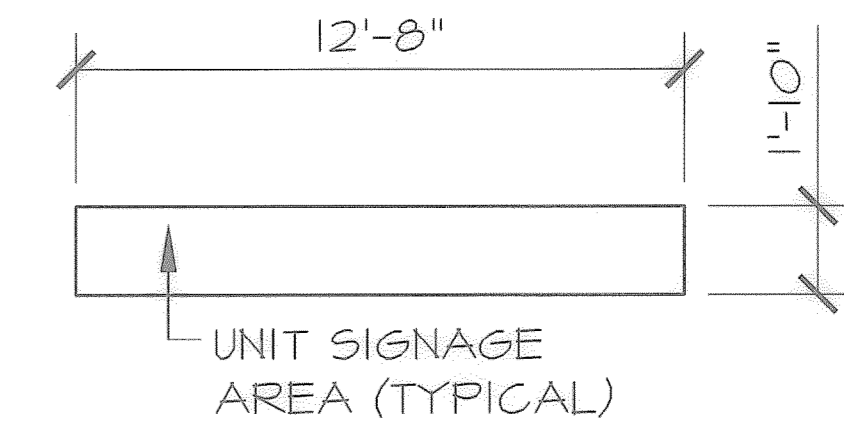


3 ELEVATION
 CFPI 1/16" = 1'-0"



- NOTES:
- EACH UNIT SIGNAGE AREA IS A LIMITED COMMON AREA ASSIGNED TO THE UNIT UPON WHICH IT IS LOCATED.
 - UNIT SIGNAGE AREAS ARE INDICATED ON PLAN AS A WHITE BOX WITH A BLACK BORDER, BEARING THE APPLICABLE UNIT NUMBER.
 - SIGNAGE PLACED ON THE UNIT SIGNAGE AREA SHALL COMPLY WITH THE BY-LAWS AND REGULATIONS OF THE CONDOMINIUM ASSOCIATION.
 - EACH UNIT SIGNAGE AREA IS 23 SQ. FT. (1'-10" HIGH x 12'-8" WIDE).

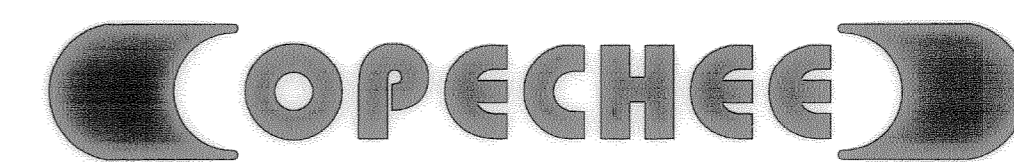
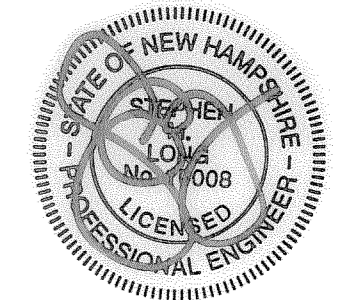
4 ELEVATION
 CFPI 1/16" = 1'-0"



5 UNIT SIGNAGE DETAIL
 CFPI 1/4" = 1'-0"

CERTIFICATION

"I hereby certify that this plan is accurate and complies with RSA 356-B:20, II. and V. Construction of the units depicted on this plan is substantially complete as defined in section 3.4 of the Declaration of Condominium."



CONSTRUCTION CORPORATION

11 CORPORATE DRIVE, BELMONT NH 03220
 PHONE (603) 527-9090 FAX (603) 527-9191

REVISION SCHEDULE

REV. #	DATE	DESCRIPTION	BY	APPR.
1	10/20/10	UNIT AREA SIZE ADJUSTMENT	JJD	
2	06/06/11	UNIT AREA SIZE ADJUSTMENT	JJD	

AMENDED CONDOMINIUM FLOOR PLAN FOR (AMENDMENT #2)

LAKES PROFESSIONAL CENTER
 369 HOUNSELL AVE
 GILFORD
 BELKNAP COUNTY
 NEW HAMPSHIRE

CFP1

DATE: 11/09/09

SCALE: AS NOTED